



## **SafeZone - Regional Safety AI Sensing System**



## Product Description

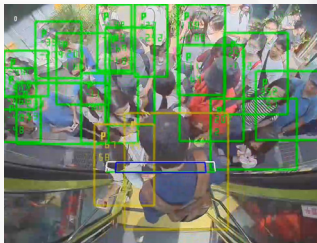
Different scenarios come with unique safety challenges. SafeZone leverages advanced safety zone definitions and integrates visual perception modules to capture real-time images. With cutting-edge AI visual recognition technology, the system precisely identifies key subjects such as passengers, staff, or vulnerable road users in various applications. This ensures safety across all environments and helps prevent accidental injuries.

### Applications – Anti-Pinch System for Bus Doors

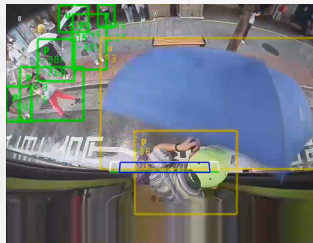
This safety system includes oToBrite's sensing controller and visual perception module, paired with a door controller. The system proactively detects the presence of individuals near the bus door area to prevent injuries caused by the doors closing.

## Product Features

- Detects a 30 cm area outside the bus door when it opens.
- Prevents the door from closing if a passenger is detected.
- Stops detection once the door is fully closed.



• Large crowds



• People carrying umbrellas

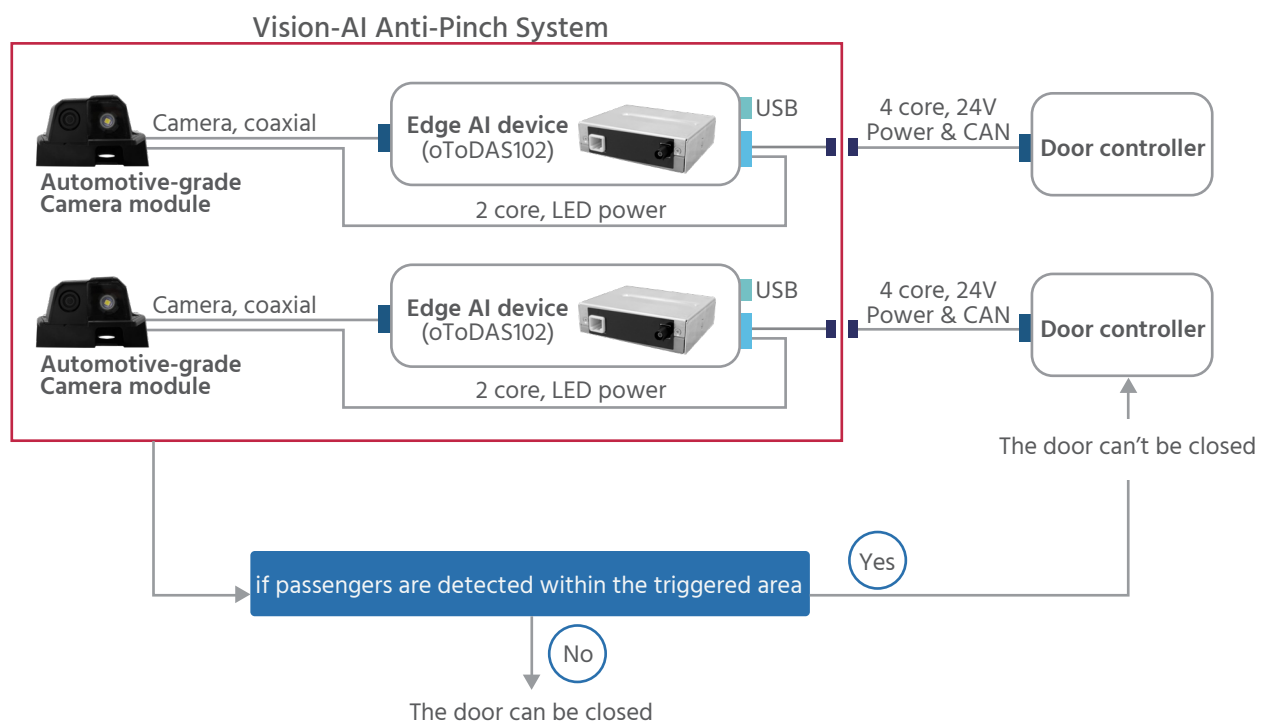


• Partially obscured person

- Target Object: Passengers
- Required Detection Trigger Area: 200 cm x 30 cm outside the bus door.
- Description: The system detects passengers within 30 cm outside the bus door and prevents the door from closing.



Including sensing controllers, visual perception modules, and wiring harnesses within the red box. The configuration includes one set for the front door and one set for the middle door.



## Other Applications – Surrounding Safety Zone Detection for Various Construction Vehicle

- The system begins detecting the safety zone for personnel when the construction vehicle is started
- If a person is detected within the safety zone, an alert is immediately triggered



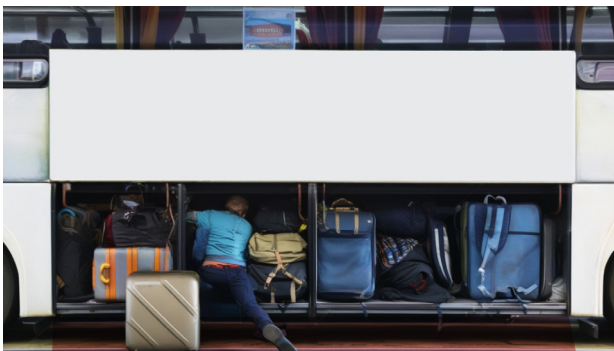
## Other Applications – Anti-Pinch System for Garbage Truck Tail Hoppers

- When the tail hopper switch is pressed, the system actively detects the area around the tail hopper
- If the system detects a person nearby, the tail hopper will not close



## Other Applications – Anti-Pinch System for Bus Luggage Compartments

- After the bus is parked, the system detects the surroundings when the luggage compartment is opened
- If the system detects a person nearby, the luggage compartment will not close



Product Spec. (Customized for different applications)

Sensing Controller (oToDAS102)	Specification
Voltage Range	16V~32V
Operation Temperature	-20°C ~ +70°C
Storage Temperature	-20°C ~ +75°C
Ingress Protection Rating	IP51

Visual perception modules (oToCAM206-L137T+LED Lamp)	Specification
Operating Temperature	-20°C ~ +70°C
Storage Temperature	-20°C ~ +75°C
Ingress Protection Rating	IP69K (Camera)
LED Lamp	In response to the night sensing function, LED lights can be installed depending on the situation

Outline Drawing



*driving easier and safer*



9F-2, No. 8, Keyan Rd., East Dist., Science-Based Industrial Park,  
Hsinchu, Taiwan (R.O.C.)



[oToBrite.com](https://oToBrite.com)



[Facebook](#)



[LinkedIn](#)



[X.com](#)