



Smart Rear View System

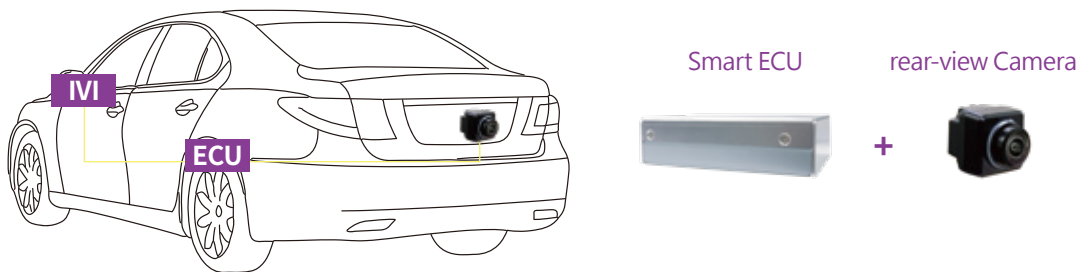
2023

Product Description

The smart rear view system enhance the existing rear camera's capabilities to support four major functions: rear view image display, multi-angle view display (including corner view, or top view), static and moving object detection, and rear cross traffic alert (RCTA).

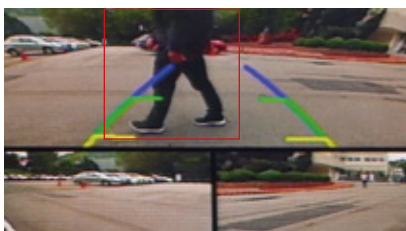
Through vision-AI technology, it can enable rear view image with static and moving object detection and RCTA (Rear Cross-Traffic Alert) functions. In terms of static and moving object detection, this technology focuses on detecting both vehicles and vulnerable road users(VRU), including children, pedestrians, and two-wheelers rider, within a range of 5 meters in length and 4 meters in width behind the vehicle. Meanwhile, the RCTA function has a detection range of up to 6 meters in length and 20 meters in width, ensuring safety during reverse maneuvers.

Furthermore, the megapixels automotive-grade camera features an ultra-wide-angle design which provides a clear view while reversing.

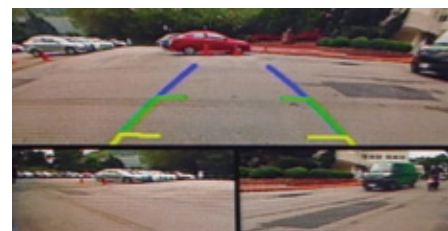


Product Features

- Support multiple smart functions with only rear-view image and vision-AI technology including multi-angle view, static and moving object detection, and rear cross traffic alert (RCTA)
- Detection range for RCTA is up to 6m behind the rear of vehicle and 20m in width
- Static and moving object detection can support vehicles and vulnerable road users (VRU) including children, pedestrians, and two-wheelers riders



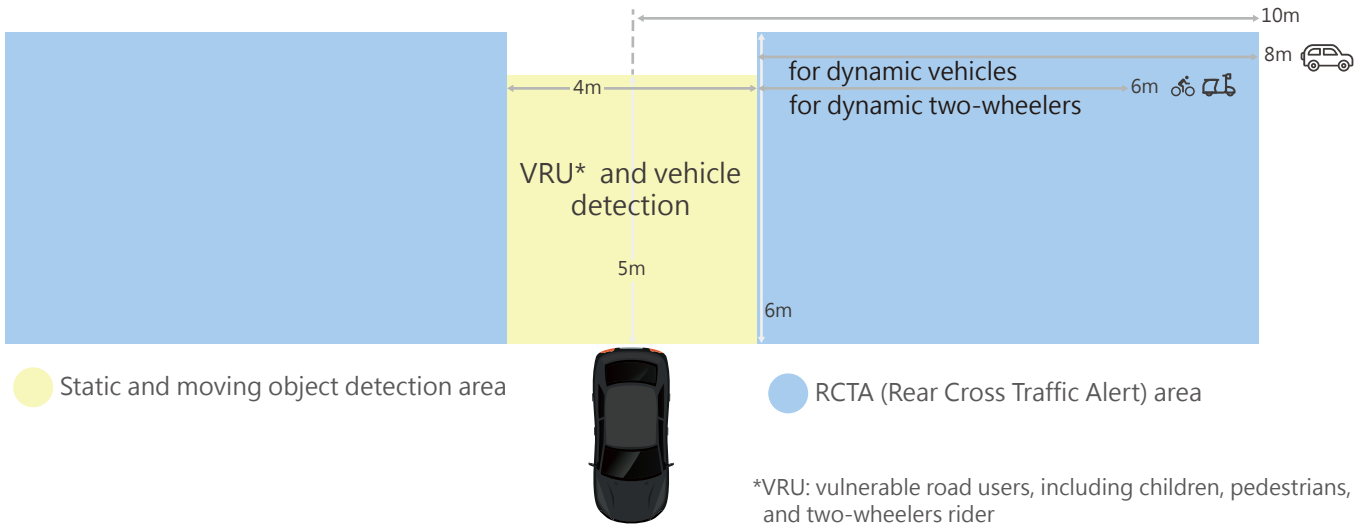
Multi-angle view & VRU detection



Muli-angle view & RCTA

* UI interface can be customized.

Product Detection Area



Four Major Functions

Function	Content
Rear view display	Rear view with static parking guidance lines
Multi-angle view display	Rear view with static parking guidance lines + corner view/ bird view
Static and moving object detection (VRU/Vehicle)	<ul style="list-style-type: none"> Host vehicle speed: 0~5km/h Detection area (rear of the host vehicle): 2 meters (Width: Calculated from the vehicle' s roll axis) x 5 meters (Length) Detectable static and moving objects: bicycles, children, motorcycles, pedestrians, two-wheelers rider, vehicles Object's relative velocity to the host vehicle: < 10 km/h Illuminance requirement: > 10 lux
Rear cross traffic alert (RCTA)	<ul style="list-style-type: none"> Host Vehicle Speed: 0~5km/h Detection area (rear of the host vehicle): 10 meters (Width: Calculated from the vehicle' s roll axis) x 6 meters (Length) Detectable objects: two-wheelers rider, vehicle <ul style="list-style-type: none"> Vehicle and motorcyclist: Illuminance > 10 lux or light on. Bicycle: Illuminance > 10 lux Target Object Speed (moving toward to the host vehicle): 1 km/h ~ 36 km/h (<= 10 km/h: warning may occur within 2 meters behind the host vehicle)

Product Spec.

ECU	
Voltage range	9V~16V
Video input format	TVI
Video output format	TVI
Size(L*W*H)	80 * 100 *27mm

1MP Camera (oToCAM163)	
Sensor	OV9716
HDR	120dB
View Angle(H/V)	183.6°/ 117.5°
Output Format	TVI
Frame rate	30 fps (default setting)
Size	23 x 23 x 27.7mm (w/o Bracket)

driving life easier and safer



6F, No.18, Prosperity Rd.II, Science-Based Industrial Park,
Hsinchu, Taiwan, R.O.C

✉ sales@otobrite.com



oToBrite.com



Facebook



LinkedIn