



Vision-AI Around View Monitoring System for Heavy Commercial Vehicle

Product Description



In the past, traditional large commercial vehicle drivers could only rely on rearview mirrors to view the surroundings, leading to numerous blind spots and potential dangers. To reduce the risk of accidents, drivers now require a 360-degree vision-AI Around View Monitoring (AVM) system that provides a clear view to help minimize vision blind spots. Additionally, through oToBritevision-AI technology, the system can even proactively detect objects around the vehicle to alert the driver, thereby enhancing overall road safety.

oToBrite's unique AVM system uses 6 cameras, installed in the front, back, left, and right to produce a 2D bird's-eye view and images from 6 different angles. The images are displayed on the vehicle's screen, allowing drivers to be aware of objects surrounding the vehicle and to keep away from collision.

Different from other AVM system products on the market, the oToBrite AVM system enables ADAS function of BSIS/MOIS/Rear collision warning, etc. Detectable objects include vehicles, two-wheeler riders, pedestrians, and more. It allows commercial vehicle drivers to use the AVM system while simultaneously realizing many ADAS functions.

Product Key Features

- Real-time dynamic video from different angles and 2D bird's-eye view image can assist drivers in understanding their surroundings.
- Vision-AI technology enables ADAS functions including Blind Spot Information System (BSIS) on both sides, Moving Off Information System (MOIS), and rear collision warning
- Stationary and moving vulnerable road users (VRU) such as pedestrians or cyclists can be protected
- 4 display mode switched automatically to comply with regulations



Low speed mode (Making turns mode20kph)

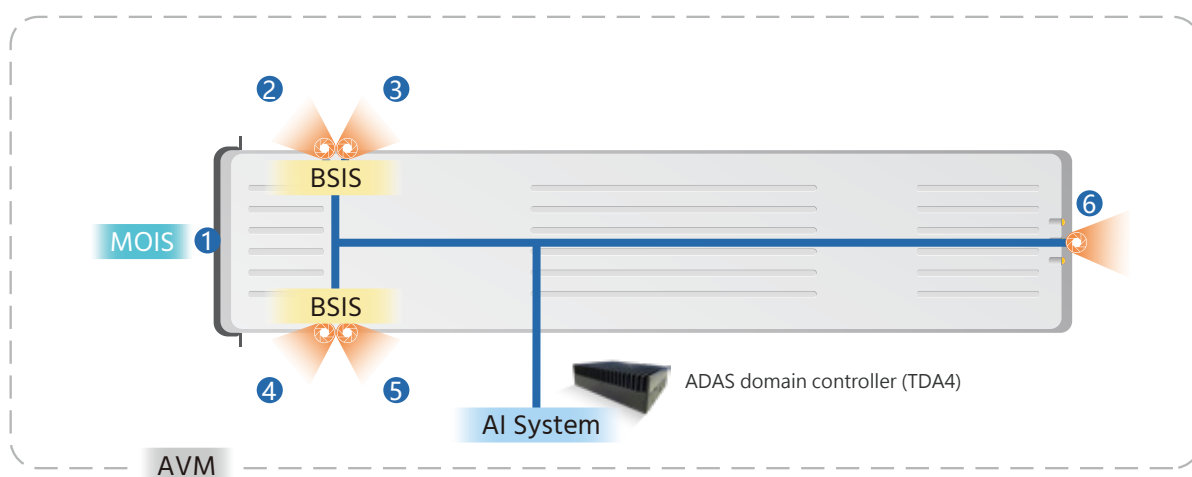
High \leq speed mode (>20kph)



Making turns mode

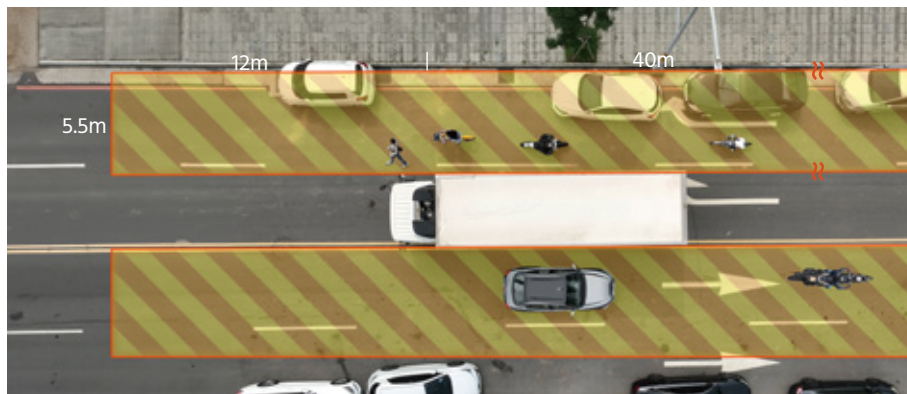
Reverse mode

ADAS function and installation position

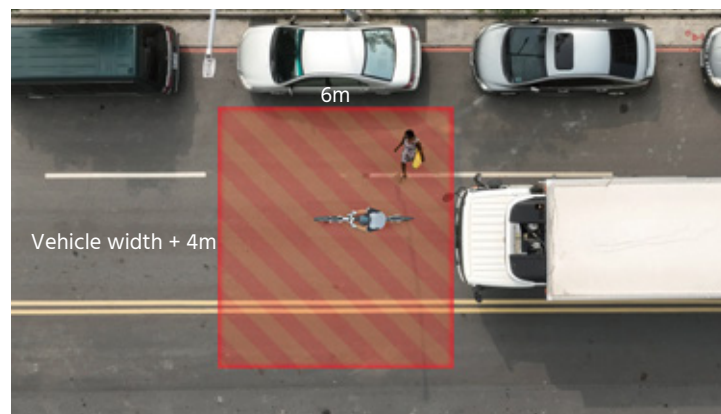


Detection and display coverage

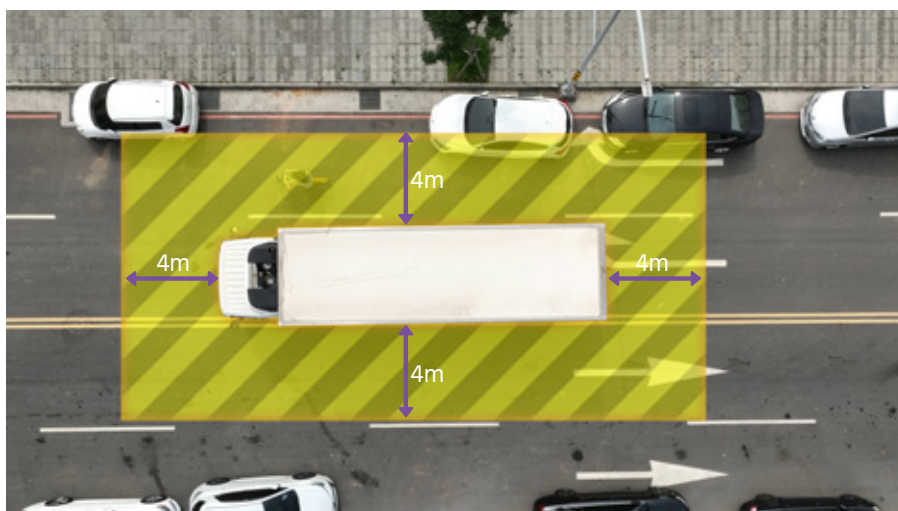
BSIS on both side



MOIS



AVM



Product Specifications

ECU (oToDAS320) or integrate with existing IVI platform	
SoC	TI TDA4
Compute Processing	4 TOPs 4x, A53 1.4Ghz, GPU
CAN bus	4 x CAN/CAN-FD
Ethernet	1 x Gigabit (RJ45), 1 x 100 Base-T

Camera (oToCAM206 for MOIS / BSIS forward / rear view)	
Sensor	CMOS (Sony ISX 019)
Resolution	1M (1280 (H) × 800(V))
Output Format	LVDS / TI 913
Waterproof	IP67 and IP69K

Camera (oToCAM220 for BSIS Backward)	
Sensor	CMOS (Sony IMX 390)
Resolution	2M (1920 (H) × 1080 (V))
Output Format	LVDS / TI 913
Waterproof	IP67 and IP69K

driving life easier and safer



6F, No.18, Prosperity Rd.II, Science-Based Industrial Park,
Hsinchu, Taiwan, R.O.C



oToBrite.com



[Facebook](#)



[LinkedIn](#)